

WE HELP YOU
GENERATE
RENEWABLE ENERGY
IN A BETTER WAY



ABOUT US

WE ARE

Our unremitting effort to be one of the finest companies in solar energy has enabled us to become a one stop solution for Solar and everything in connection to it. We are a major player in the market for the distribution of solar panels and its components. In short, we have got everything solar. We provide all the necessary components and engineer optimum packages as per the needs of our client for both industrial and domestic, by ensuring zero wastage of resources. We have experience in supplying Solar Energy solutions to our clients where the power availability has been critical. We at RIM PROJECTS do not compromise Quality and Safety with regard to our products and components, our services are efficient and highly reliable.

WHY CHOOSE RIM PROJECTS ?

We Distribute Solar PV Power System Components.

We are Authorised Channel Partners for India of FIMER Solar Inverters

We are Manufacturers of Solar Combiner Boxes and AC Distribution Boxes.

We also distribute Anchor by Panasonic Solar Panels and Siechem Cables.

We also trade Hot dipped Galvanised Structures and Aluminium Structures and have our own designed structures.



BOARD OF DIRECTORS



RAHUL IYPE

Managing Director



RAMYA ALEXANDER

Director Finance



MU IYPE

Director Business
Development



ANNIE IYPE

Director Operations

COMPANY MILESTONES

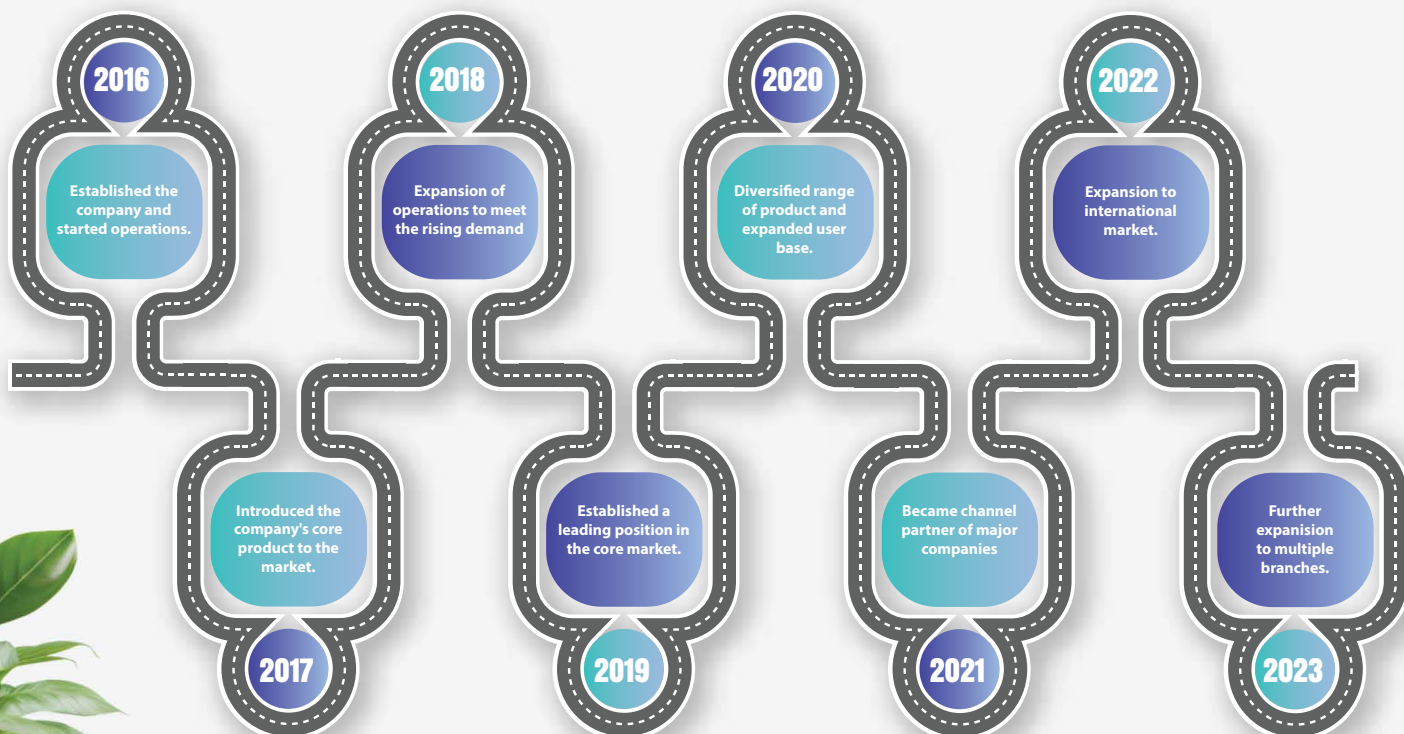


TABLE OF CONTENTS

SURGE PROTECTION DEVICES	7
DC Surge Protection device	7
AC Surge Protection device	8
DATA SURGE PROTECTORS	11
RJ11 TELECOM SURGE PROTECTORS	11
19" PATCH PANEL PROTECTOR FOR HIGH SPEED NETWORK STP	12
MINIATURE CIRCUIT BREAKER	12
DC MCB	12
AC MCB	13
MCCB	14
SWITCH DISCONNECTORS	14
CHANGE OVER SWITCHES	15
AC Change Over Switches	15
DC Change Over Switches	15
Offload Change Over Switches	15
DIN RAIL TERMINAL BLOCKS	16
DISTRIBUTION BLOCK	16
ENCLOSED SWITCHES	17
DC LOAD BREAK SWITCHES	17
FUSE AND FUSE HOLDERS	18
HRC FUSE LINK, FUSE BASE AND FUSE HOLDER	18
ENCLOSED SWITCH DISCONNECTOR FUSE	19
SWITCH FUSE UNIT	20
MC4 CONNECTORS	20
HAND TOOLS	21
PVC WIRING DUCTS	22
FLEXIBLE CONDUITS FPYL20B PG16	23
WEATHER RESISTANT CABLE TIES	23
EARTHING MATERIALS	23
EARTHING ROD	26
READY TO FIT EARTH KIT	26
ENERGY METERS	26
NET METERS	27
THREE PHASE LT CT METER ER00P	27

TABLE OF CONTENTS

WALKWAY	27
4 PANEL HOT DIPPED GALVANISED SOLAR MOUNTING STRUCTURE	28
8 PANEL HOT DIPPED GALVANISED SOLAR MOUNTING STRUCTURE	29
AC CABLES	30
SOLAR DC CABLES	30
ARMOURED ALUMINIUM UG CABLE	31
ALUMINIUM CABLE FOR EARTHING	31
ENCLOSURES	31
ABS WATERSPROOF BUCKLE CASE ENCLOSURES	32
FINDER S.P.A	33
LI-ION BATTERY	33
SOLAR PV MODULES	34
FLEXIBLE BUSBARS	35
GRID TIED INVERTERS	35
UTILITY COMBINER BOX WITH RELAY CIRCUIT	41
CHANGEOVER PANEL WITH COMMUNICATION	42
COMPARTMENTALIZED HENSEL ACDB FOR HOME & COMMERCIAL APPLICATIONS	42
AC DISTRIBUTION BOXES	43
STRING COMBINER BOXES	43
CUSTOMIZED DCDB	44
CUSTOMIZED ACDB	45
STRIDER COMBINER BOXES	46
EV CHARGER	46

SURGE PROTECTION DEVICES

— DC Surge Protection device

Make: CITEL

DS50PV-500 Type 2 Surge Protection device

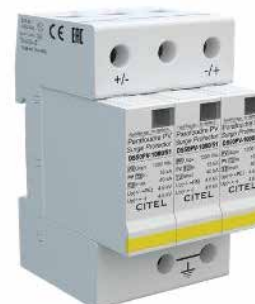
Max. PV Voltage	500VDC
Max. operating voltage	530V
Protection modes	MC
Nominal discharge current(In)	20kA
Max. discharge current(I _{max})	40kA
Protection level(U _p)	1,8kV



Make: CITEL

DS50PV-1000 Type 2 Surge Protection device

Max. PV Voltage	1000VDC
Max. operating voltage	1060V
Protection modes	MC
Nominal discharge current(In)	20kA
Max. discharge current(I _{max})	40kA
Protection level(U _p)	3,6kV



Make: CITEL

DS50PV-1000 Type 1+2 Surge Protection device

Max. PV Voltage	1000VDC
Max. operating voltage	1200Vdc
Current withstand short circuit PV	15000A
Protection modes	CM/DM
Nominal discharge current(In)	15kA
Max. discharge current(I _{max})	40kA
Protection level(U _p)	3,6kV



Make: MERSEN

DC SPD STPT2-40K600V-UPV

Max. PV Voltage	660VDC
Current withstand short circuit PV	10000A
Nominal discharge current(In)	20kA
Max. discharge current(I _{max})	40kA
Protection level(U _p)	<=2.6kV



Make: MERSEN

DC SPD STPT2-40K1000V-YPV

Max. PV Voltage	1060VDC
Current withstand short circuit PV	10000A
Nominal discharge current(In)	20kA
Max. discharge current(Imax)	40kA
Protection level(Up)	<=1.4kV



Make: ABB

OVR PV T2 40 1000PQS

Max. PV Voltage	1100VDC
Number of protected lines	2
Nominal discharge current(In)	20kA
Max. discharge current(Imax)	40kA
Voltage protection level(Up)	3,8kV
Short circuit current	10kA
Standards	EN 50539-11



AC Surge Protection device

Make: CITEL

Single phase Type 2 Surge protection device DS240/280

SPD Type	2
Network	230V Single phase
Nominal line voltage	230 Vac
Max. AC Operating voltage	280Vac
Max load current	20A
Current withstand short circuit PV	10000A
Nominal discharge current(In)	20kA



Make: CITEL

Three phase Type 2 Surge protection device DS440/280

SPD Type	2
Network	230/400V 3- PHASE
Nominal line voltage	230Vac
Max. AC Operating voltage	280Vac
Current withstand short circuit PV	10000A
Nominal discharge current(In)	20kA
Max. discharge current(Imax)	40kA



Make: CITEL

Single phase Type 1+2 Surge protection device(DS132R-280/G)

SPD Type	Type 1+2
Network	230V Single phase
Nominal line voltage	208Vac
Max. AC Operating voltage	280Vac
Admissible short-circuit current	25000A
Nominal discharge current(In)	20kA
Max. discharge current(I _{max})	50kA



Make: CITEL

Three phase Type 1+2 Surge protection device(DS134R-280/G)

SPD Type	Type 1+2
Network	230/400V 3- phase+N
Nominal line voltage	230Vac
Max. AC Operating voltage	280Vac
Current withstand short circuit PV	25000A
Nominal discharge current(In)	20kA
Max. discharge current(I _{max})	50kA



Make: MERSEN

AC SPD STPT2-40K320V 2P

Uc voltage	320VAC
Number of poles	2
Current withstand short circuit PV	10000A
Nominal discharge current(In)	20kA
Max. discharge current(I _{max})	40kA
Protection level(U _p)	<=1.4V



Make: MERSEN

AC SPD STPT2-40K320V 4P

Uc voltage	320VAC
Number of poles	4
Current withstand short circuit PV	10000A
Nominal discharge current(In)	20kA
Max. discharge current(I _{max})	40kA
Protection level(U _p)	<=1.4V



Make: ABB

SPD-OVRT2 1N40-275PQS

Nominal AC Voltage of the system	230/400V
Number of poles	2
Current withstand short circuit PV	100kA
Nominal discharge current(In)	20kA
Max. discharge current(I _{max})	40kA
Short Circuit Protection devices	Curve B Breakers ≤ 125A Curve C Breakers ≤ 125A gL Type Fuses ≤ 125A gG Type Fuses ≤ 125A
Standards	IEC 61643-II/EN 61643-II
Suitable for	To protect the systems against the transient overvoltage(lightning)
Voltage Protection Level(Up)	(L-N) 1.25kV (N-PE) 1.4kV (L-PE) - kV
Voltage Rating DC	350V



Make: ABB

SPD FP-OVRT2 3N40-275PQS

Nominal AC Voltage of the system	230/400V
Number of poles	4
Current withstand short circuit PV	10000A
Nominal discharge current(In)	20kA
Max. discharge current(I _{max})	40kA
Short Circuit Protection devices	Curve B Breakers ≤ 125A Curve C Breakers ≤ 125A gL Type Fuses ≤ 125A gG Type Fuses ≤ 125A
Standards	IEC 61643-II/EN 61643-II
Suitable for	To protect the systems against the transient overvoltage(lightning)
Voltage Protection Level(Up)	(L-N) 1.25kV (N-PE) 1.4kV (L-PE) - kV
Voltage Rating DC	350V



Make: ABB

SPD OVRT1-T2 3N 12.5-275S PQS

Nominal AC Voltage of the system	230/400V
Number of poles	4
Current withstand short circuit PV	10000A
Nominal discharge current(In)	20kA
Max. discharge current(I _{max})	80kA
Short Circuit Protection devices	Curve B Breakers ≤ 125A Curve C Breakers ≤ 125A gL Type Fuses ≤ 160A gG Type Fuses ≤ 160A



Standards	IEC 61643-11/EN 61643-11
Suitable for	To protect the systems against the transient overvoltage(lightning)
Voltage Protection Level(Up)	(L-N) 1.2kV (N-PE) 1.1kV (L-PE) – 1.35kV
Voltage Rating DC	350V

DATA SURGE PROTECTORS

Make: CITEL

MJ8-POE

Description	RJ45 surge protector for POE-A
Network	POE and Gigabit Ethernet, High POE
Max. data rate	1000Mbps
SPD Configuration	4 pairs + shielded
Pin outs	(1-2)(3-6)(4-5)(7-8)
Nominal line voltage	48Vdc
Max. DC operating voltage	60Vdc
Max. Load current	1200 mA
Max. frequency	> 100 MHz
Insertion loss	< 1 dB
Line/Ground Nominal discharge current	2000 A
Nominal discharge current Line/Line	500 A
Impulse current	500A
Protection level	70 V
Protection rating	IP20
Standards compliance	< 1 dB



RJ11 TELECOM SURGE PROTECTORS

Make: CITEL

MJ6-1T

Description	RJ11 surge protector for 1 telephone line
Network	RTC, ADSL2, SDSL, 1 pair
Max. data rate	30Mbps
SPD Configuration	1 pair + shielded
Pin outs	1-pair (3-4)
Nominal line voltage	150 V
Max. DC operating voltage	170Vdc
Max. Load current	300 mA



Max. frequency	> 10 MHz
Insertion loss	< 1 dB
Line/Ground Nominal discharge current	2500 A
Nominal discharge current Line/Line	2500 A
Impulse current	500A
Protection level	220 V
Protection rating	IP20
Standards compliance	IEC 61643-21 / EN 61643-21 / UL497A

19" PATCH PANEL PROTECTOR FOR HIGH SPEED NETWORK STP

Make: CITEL

PL24-CAT6	
Description	Surge protector for CAT6
Network	10 Gigabit Ethernet, Cat.6 cabling
Max. data rate	1000Mbps
Insertion loss	< 1 dB
Nominal line voltage	5 Vdc
Max. DC operating voltage	8 Vdc
Max. Load current	1000 mA
Max. frequency	250MHz
Line/Line Nominal discharge current	500 A
Line/Ground Nominal discharge current	2000 A
Impulse current	500A
SPD configuration	24 ports
Protection rating	IP20
Standards compliance	IEC 61643-21 / EN 61643-21 / UL497B



MINIATURE CIRCUIT BREAKER

— DC MCB

Make: ABB

16A DP DC MCB (SB202M-C16/20/25/32/40/63DC)	
Number of poles	2
Tripping Characteristics	C
Rated Current	16/20/25/32/40/63A
Rated voltage	500VDC
Rated short circuit breaking capacity	10kA
Standards	IEC / EN 60947-2



Make: ABB

100A FP AC MCB (S804B-C100)

Number of poles	4
Tripping Characteristics	C
Rated Current	100A
Rated Operational voltage	440V
Rated frequency	50/60Hz
Rated insulation voltage	500V
Rated short circuit capacity	10kA



Make: ABB

125 A FP MCB S804B-C125

Number of poles	4
Tripping Characteristics	C
Rated Current	125A
Rated insulation voltage	440V
Rated short circuit capacity	16kA
Rated frequency	50/60Hz
Rated operational voltage	230/400VAC



— AC MCB

Make: ABB

16A SP AC MCB (SB201M-C16/25/32)

Number of poles	1
Tripping Characteristics	C
Rated Current	16/25/32A
Rated insulation voltage U_i acc. to IEC/EN 60664-1	250 V AC (phase to ground) , 440 V AC (phase to phase)
Rated Operation voltage	230/400VAC
Rated short circuit capacity	10kA
Rated frequency	50/60Hz



Make: ABB

16A DP AC MCB (SB202M-C16/32/63)

Number of poles	2
Tripping Characteristics	C
Rated Current	16/32/63A
Rated insulation voltage U_i acc. to IEC/EN 60664-1	250 V AC (phase to ground) , 440 V AC (phase to phase)
Rated Operation voltage	400VAC



Rated short circuit capacity	10kA
Rated frequency	50/60Hz

Make: ABB

16A FP AC MCB (SB204M-C16/32/63)

Number of poles	4
Tripping Characteristics	C
Rated Current	16/32/63A
Rated insulation voltage U_i acc. to IEC/EN 60664-1	250 V AC (phase to ground), 440 V AC (phase to phase)
Rated Operation voltage	400VAC
Rated short circuit capacity	10kA
Rated frequency	50/60Hz



MCCB

Make: ABB

SACE T1D/PV160

Number of poles	4
Rated Current	160A
Rated voltage	1100VDC
Rated Impulse Withstand Voltage	8kV
Cat	DC-22B
Standards	IEC 60947-3



SWITCH DISCONNECTORS

Make: ABB

Switch Disconnecter OTDC 32F3

Rated Operational Current	32A
Rated insulation voltage	1000V
Rated Operation voltage	1000V
Rated short circuit capacity	0.8kA
Rated Impulse Withstand Voltage	8kV



Make: ABB

100 DC OTDC 100/200/250E 11K

Rated Operational Current	100/200/250A
Number of poles	2
Rated Operation voltage	1000V
Other features	Direct mount handle Single circuit



CHANGE OVER SWITCHES

— AC Change Over Switches

Make: ABB

100A FP OT1004FC Change Over Switches

Rated Impulse Withstand Voltage	8kV
Number of poles	4
Rated insulation voltage	750V
Rated Operation Current AC -21A(Ie)	(380 ... 415 V) 100 A (500 V) 100 A (690 V) 100 A
Rated Operation Current AC -22A(Ie)	(380 ... 415 V) 100 A (500 V) 100 A (690 V) 100 A
Rated Operational Current AC-23A (Ie)	(380 ... 415 V) 80 A (500 V) 60 A (690 V) 40 A
Rated Operational Power AC-23A (Pe)	(220 ... 240 V) 37 kW (500 V) 37 kW (690 V) 37 kW
Rated Operational Voltage	750V
Rated Short-time Withstand Current (ICW)	for 1 s 2.5 kiloampere rms



— DC Change Over Switches

Make: Salzer

32A DC CHANGEOVER SWITCH

Rated Current	32A
Number of poles	4
Rated insulation voltage	1500V
Rated Operation voltage	1500V
Rated short circuit capacity	5kA
Rated Impulse Withstand Voltage	8kV



— Offload Change Over Switches

Make: C&S

CSCSOF32CO4/ CSCSOF63CO4

Rated Current	32/63A
Number of poles	4
Rated voltage	415
Utilization category	AC22A
Standards	IEC 60947/IS 13947-1&3



DIN RAIL TERMINAL BLOCKS

Make: Connectwell

CTS Series Screw Clamp Terminal blocks

Model	CTS4UN	CTS6U	CTS10U	CTS16U	CTS25UN	CTS35UN	CTS50/70N
Width(Thickness) xLength	6x43 mm	8x43mm	10x43mm	12x43mm	12x48mm	16x50.5mm	20.5x77mm
Rated Voltage	1000V	1000V	1000V	1000V	1000V	1000V	1000V
Rated current	32A	41A	57A	76A	101A	125A	192A
Material	Polyamide	Polyamide	Polyamide	Polyamide	Polyamide	Polyamide	Polyamide
Rated impulse voltage/Pollution degree	8KV/3	8KV/3	8KV/3	8KV/3	8KV/3	8KV/3	8KV/3
Mounting Possibility	DIN 32/DIN 35/DIN 35-15 Rail						
Colour	Grey,Red, Yellow,Black, Blue	Grey,Red, Yellow,Black, Blue	Grey,Red, Yellow,Black, Blue	Grey,Red, Yellow,Black, Blue	Grey	Grey	Grey
End clamp	CA702/CA802	CA702/CA802	CA702/CA802	CA702/CA802	CA702/CA802	CA702/CA802	CA202/CA102
End plate	End plate in grey EP2.5/4UN	End plate in grey EP6/10U	End plate in grey EP6/10U	Seperater plate in Grey (SP6/10U)	Partition plate in grey (PP25UN)	Partition plate in grey (PP35UN)	



Note: CA702,CA102- End clamp in Polyamide 66 suitable for Din 32/Din 35/Din 35-15 Rails
CA802,CA202- End clamp in Polyamide suitable for Din 35/Din 35-15 Rails

DISTRIBUTION BLOCK

Make: TE CONNECTIVITY

DISTRIBUTION BLOCK 80A-DBL 80

Maximum Current	80A
Rated voltage	1000V AC/1500 VDC
Short time withstand current (Icw 1s)	1920A
Rated peak withstand current (Ipk)	27kA
Protection	IP20

DISTRIBUTION BLOCK 125A-DBL 125

Maximum Current	125A
Rated voltage	1000V AC/1500VDC
Short time withstand current (Icw 1s)	4200A
Rated peak withstand current (Ipk)	30kA
Protection	IP20

DISTRIBUTION BLOCK 160A-DBL 160

Maximum Current	160A
Rated voltage	1000V AC/1500VDC
Short time withstand current (I _{cw} 1s)	6000A
Rated peak withstand current (I _{pk})	30kA
Protection	IP20

DISTRIBUTION BLOCK 400A-DBL 400

Maximum Current	400A
Rated voltage	1000V AC/1500VDC
Short time withstand current (I _{cw} 1s)	18000A
Rated peak withstand current (I _{pk})	51kA
Protection	IP10

**ENCLOSED SWITCHES**

Make: ABB

ENCLOSED SWITCH ONE20M2W/4W

Rated current	20A
Rated voltage	240/415V
Number of poles	2/4
Rated operational short circuit current I _p (rms)	1kA
Protection	IP67
Suitable cable size	0.5-4sqmm
Suitable compression gland size	7-12mm diameter

**DC LOAD BREAK SWITCHES**

Make: SALZER

Type	Rated current	Number of poles	Degree of protection
DL216 30409 B23FLGB	16A	4 pole	IP 30

DL363 30209 B23FLGB	63A	4 pole	IP 30
---------------------	-----	--------	-------

- Compact and reliable
- Finger Protection
- Easy Installation
- Wiping Contacts
- Excellent switching and high short circuit capacity
- Optional Extended Terminals
- DIN rail mounting – Suitable for DB boards
- Various Panel mounting Options – Front mounting, Rear mounting
- Enclosure mounting



Type	Rated current	Number of poles	Degree of protection
DL232 30409 B23FLGB	32A	4 pole	IP 30
DCLB 216 30409 B23DB PLGB (with padlock)	16A	4 pole	IP 30
DCLB 232 30409 B23DB PLGB(with padlock)	32A	4 pole	IP 30

FUSE AND FUSE HOLDERS

Make: MERSEN

USM1 HEL Fuse Holder

Maximum DC Voltage	1000VDC
Rated Current	30A



HP 10M15 /HP 10M20/HP 10M30 Fuse link

Rated voltage	1000VDC
Rated Current	15/20/30A
Maximum Breaking capacity	10kA

HRC FUSE LINK, FUSE BASE AND FUSE HOLDER

Make: C&S

CTIA25-25A HRC Fuse link

Rated voltage	415VAC
Rated Current	25A
Breaking capacity	80kA



Make: C&S

CTCP 80/100 HRC Fuse link

Rated voltage	415VAC
Rated Current	80/100A
Breaking capacity	80kA

Make: C&S

CTIS 50A HRC Fuse link

Rated voltage	415VAC
Rated Current	50A
Breaking capacity	80kA

Make: C&S

CNS 20/32A HRC Fuse link

Rated voltage	415VAC
Rated Current	20/32A
Breaking capacity	80kA

Make: C&S

CNS32H HRC Fuse holder

Rated voltage	415V
Rated Current	32A

Make: EATON Bussmann

PV-100ANHI-FUSE 80/100/175A 1000V DC

Rated voltage	1000VDC
Rated Current	80/100/175A
Breaking capacity	50kA

Make: EATON Bussmann

SDI-D-PV 250A 690VAC/1500VDC IEC 1000VDC UL FUSE BASE

Rated voltage	1000VDC
Rated Current	80/100/175A
Breaking capacity	250A

ENCLOSED SWITCH DISCONNECTOR FUSE

Make: C&S

ECS SDF 32/63/100/125 B4FN- 32/63/100/125 4P SFU

Number of poles	4
Rated Current	32/63/100/125A



SWITCH FUSE UNIT

Make: C&S

32A Double Pole Rewirable Switch Fuse Unit

Number of poles	4
Rated Current	32A
Rated Voltage	240V



MC4 CONNECTORS

Make: STAUBLI

MC4 SOLAR POWER CONNECTORS

Insulation material	Polycarbonate (PC)
Contact material	Copper, Tin plated
Rated current	30A
Rated voltage	1500V
Test voltage	6000V
Contact resistance	Less than 3mΩ
Degree of protection	IP67
Pin Dimensions	2.5mm ² –6mm ² /AWG14–10
Suitable diameter of solar cable outer	5.5–7.2mm



JUNCTION BOX PANEL CONNECTORS

Insulation material	Polycarbonate (PC)
Contact material	Copper, Tin plated
Rated current	30A
Rated voltage	1500V
Test voltage	6000V
Contact resistance	Less than 3mΩ
Degree of protection	IP67
Pin Dimensions	2.5mm ² –6mm ² /AWG14–10
Suitable diameter of solar cable outer	5.5–7.2mm



T BRANCH MC4 CONNECTORS (Make : REOO)

Insulation material	PPO
Contact material	Copper, Tin plated
Rated current	25A
Rated voltage	1500V
Test voltage	6000V
Contact resistance	Less than 3mΩ
Degree of protection	IP67



MC4 Y SOLAR POWER CONNECTOR (Make : REOO)t

Insulation material	Polycarbonate(PC)
Contact material	Copper, Tin plated
Rated current	25A
Rated voltage	1500V
Test voltage	6000V
Contact resistance	Less than 3m Ω
Degree of protection	IP67

**MC4 1 to 3 Y SOLAR POWER CONNECTOR**

Insulation material	Polycarbonate(PC)
Contact material	Copper, Tin plated
Rated current	25A
Rated voltage	1500V
Test voltage	6000V
Contact resistance	Less than 3m Ω
Degree of protection	IP67



HAND TOOLS

Make: STRIDER

MC4 Crimping Tool Large

- High crimping quality. • Suitable for 2.5,4,6 SQ MM SOLAR CABLE.
- High transmission of force to reduce the working fatigue according to lever control.
- Portable style with perfect handle gripping position,light weight, logical structure.
- Perfect handle shape design matching human being engineering principle.
- Guarantees perfect crimping effect.
- It's easy to operate while using pliers,just insert the top into its position and press it.
- Self locking and releasing mechanic unit.

**MC4 Crimping Tool Small**

- High crimping quality. • Suitable for 2.5,4,6 SQ MM SOLAR CABLE.
- High transmission of force to reduce the working fatigue according to lever control.
- Portable style with perfect handle gripping position,light weight, logical structure.
- Perfect handle shape design matching human being engineering principle.



- Guarantees perfect crimping effect.
- It's easy to operate while using pliers, just insert the top into its position and press it.
- Self locking and releasing mechanic unit.

CABLE STRIPING TOOL

- Suitable for stripping 2.5, 4, 6 sqmm cable.
- Automatic clamping action and length gauge facility to ensure stripped ends are uniform.

SOLAR WRENCH

- This spanner is suitable for assembling and disassembling of MC4 male/female plug.
- Light weight, portable and easy to use
- Double wrenches quick screw down
- Very light and very strong and smooth
- Saves time and manpower for installation
- Open End Wrench
- Size of Approx. 12.5cm x 4cm x 1.8cm (L x W x H)
- Includes 2 x Solar Connector Wrench

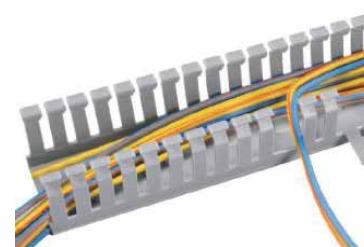
PVC WIRING DUCTS

Make: TRINITY TOUCH

Type	Description	Duct Size WXH (mm)	Meter/Box
TBWDN 25X25	Wiring Duct Narrow slot, Light Grey, 2 meter	25x25	120
TBWDN 25X45	Wiring Duct Narrow slot, Light Grey, 2 meter	25x45	96
TBWDN 45X45	Wiring Duct Narrow slot, Light Grey, 2 meter	45x45	64
TBWDN 60X60	Wiring Duct Narrow slot, Light Grey, 2 meter	60x60	36
TBWDN 80X80	Wiring Duct Narrow slot, Light Grey, 2 meter	80x80	16

Make: SALZER

- Unslotted B type
- Duct with cover width x Height (mm) of 45x 45
- Length of 1 mtr
- Black coloured
- Nonflammable, warp proof and non-brittle



FLEXIBLE CONDUITS FPYL20B PG16

Make: TRINITY TOUCH

- Highly flexible and high fatigue life.
- High impact strength and recovers if crushed
- Temperature range -40°C to +120°C
- Highly resistant to solvents and oils
- Halogen, Sulphur and phosphorus free
- Nylon (PA6) Corrugated flexible conduit
- Colour black
- Real Length 100 m
- Outside diameter of 21.2 mm
- Inside diameter of 17.1 mm
- Min inside bend radius of 40 mm



WEATHER RESISTANT CABLE TIES

Make: GIANTLOK

Material	Polyamide
Colour	Black
Application	Ultraviolet weather resistant tie for outdoor application

Part no	Length (mm) inch	Width (mm) inch	Max.Bundle Dia. Mm(inch)	Min loop tensile strength kg(lbs)
GT-80M-UV	80(3.15)	2.4 (0.09)	15 (0.59)	8.0 (17.68)
GT-100M-UV	100(3.94)	2.5 (0.10)	22 (0.87)	8.1 (18)
GT-160M-UV	160(6.30)	2.5 (0.10)	40 (1.57)	8.1 (18)
GT-150I-UV	150(5.91)	3.6 (0.14)	35 (1.38)	18.2 (40)
GT-200I-UV	200(7.87)	3.6 (0.14)	53 (2.09)	18.2 (40)
GT-250ST-UV	250(9.84)	4.8 (0.19)	60 (2.36)	22.2 (50)
GT-300ST-UV	300(11.81)	4.8 (0.19)	76 (2.99)	22.2 (50)
GT-370ST-UV	370(14.57)	4.8 (0.19)	102 (4.02)	22.2 (50)
GT-450ST-UV	450(17.72)	4.8 (0.19)	116 (4.57)	22.2 (50)
GT-300HD-UV	300(11.81)	7.6 (0.30)	76 (2.99)	54.4 (120)
GT-370HD-UV	370 (14.57)	7.6 (0.30)	102 (4.02)	54.4 (120)
GT-430HD-UV	430(16.93)	9.0 (0.35)	110 (4.33)	79.4 (175)
GT-530HD-UV	526 (20.71)	9.0 (0.35)	140 (5.51)	79.4 (175)



EARTHING MATERIALS

Make: EXCEL EARTHING

COPPER BONDED ROD WITH NUT AND BOLTS

Length	Diameter
1200mm	14.2mm

- Copper bonded rods with nut and bolt terminal joints provide a firm area of contact for connecting earth strips
- Stainless steel nut and bolt provided with the copper bonded rods of 100 microns will help achieve a good contact
- Provides resistance against galvanic/bi-metallic corrosion associated with it.



Make: EXCEL EARTHINGS

COPPER BONDED ROD WITH TINNED TERMINALS

Length	Diameter
1200mm	14.2mm
2000mm	14.2mm
3000mm	17.2mm



- 99.9% pure electrolytic copper is molecularly bonded with steel rod which is nickel sealed again coated with tin to give an extra layer of coating of 12 microns (as per IEC 62439) over the 250 microns' copper bonding.
- Ensures total protection from galvanic corrosion.
- Ideal for sea shore areas and in areas with low soil resistivity.

Make: EXCEL EARTHINGS

COPPER BONDED STRIPS

Width	Thickness(mm)
25	6
32	6
40	6
50	6
50	10
75	6



- Copper is molecularly bonded with nickel coated steel strip with a minimum 100-250 microns as copper coating thickness.
- Economically viable than virgin copper strips.
- Used for lightning protection system as conductors in air termination system, down conductors equipotential bonding system and to interconnect the earth rods in ring earthing.

LIGHTNING ARRESTER

Dimension (mm)	Number of spikes	Lghtning protection material	Spikes material	Insulation medium
16x850	Single	Copper clad steel	Stainless steel	Nylon 66
16x1000	Single	Copper clad steel	Stainless steel	Nylon 66
20x1000	Multi spike	Copper clad steel	Stainless steel	Nylon 66
20x2000	Multi spike	Copper clad steel	Stainless steel	Nylon 66



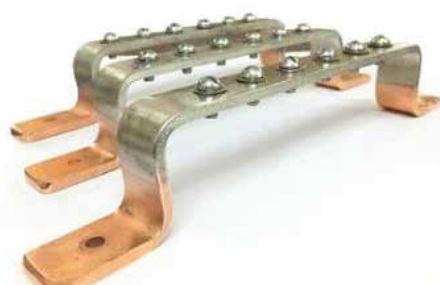
EARTH PIT CHAMBER

Type	Top diameter(mm)	Base diameter(mm)	Height (mm)	Lid cover
EPC 18X18	180	240	210	Green or maroon
EPC 24X24	240	310	230	Green or maroon
EPC 30X30	300	400	280	Green or maroon



TINNED COPPER BONDED TERMINAL STRIPS

- Material Tin and copper
- Panel mounting
- Screw size of 5 x 15mm
- Copper thickness of 100 microns
- 25mm Width
- 3-4mm thickness
- 6 Connecting terminals
- Good resistance to corrosion.



COPPER BONDED PLATE

- Material Carbon steel, Copper and Nickel
- Finish Copper plated
- Plate thickness of 3mm
- 2x2 Feet Size
- Minimum of 100 microns of copper coating



ALUMINIUM 8MM DOWNCONDUCTOR WITH INSULATION

- Material Aluminium
- 50 sqmm cross sectional area
- Voltage capacity of 15kV • IEC/IS 62305-3/2010 standards
- Insulated and bare conductors



EARTHING COMPOUND

- Earthing Compound has good conductivity
- Good moisture absorption
- Retains capacity for long period
- Continuous resistance against corrosion
- Provides a superior quality solution to the toughest grounding problems
- In areas of poor conductivity such as rocky areas, compound will be a perfect choice
- Certified for the product performance on the basis of IEC – 62561-7 and 2011/65/EU (Rohs-2), eco-friendly certification



ELECTRA-FILL(CARBON BASED COMPOUND)

- Suitable in areas where the soil resistivity is considerably higher.
- electronically conductive so that it provides a normalized soil conductivity.
- Doesn't contain any hazardous chemicals which harm the environment.
- Provides a quality earthing solution, minimizing seasonal variations.
- Certified for the product performance on the basis of IEC – 62561-7 and 2011/65/EU (Rohs-2), eco-friendly certification.

**EARTHING ROD**

Make: ABB

- 3/4 (NOM)X1800MM EXTENSIBLE CU-BOND
- Threaded Copperbond Earth Rod
- Nominal Diameter of 3/4-Inch
- Length of 1800mm
- Thread UNC of 3/4-Inch
- Shank of 17.2mm

**READY TO FIT EARTH KIT**

Make: OBO

Includes following items

- 1x14.2 mm dia 1250mm length Copper coated steel rod with 250 micron on electrolytic copper coating
- 5 Kg of Earth enhancing compound (tested as per IEC 62561-7)
- Connection clamp
- "Earth- Do not Disconnect" Signage board with connecting screws
- Installation instruction sticker

Note: Earth Inspection chamber should be ordered extra

**ENERGY METERS****Single phase Energy meters**

Make	L&T	Genus
System of supply	Single phase	
Rated Voltage	240V	
Basic current	5A	
Maximum current	30A	
Frequency	50Hz	



Three phase Energy meters

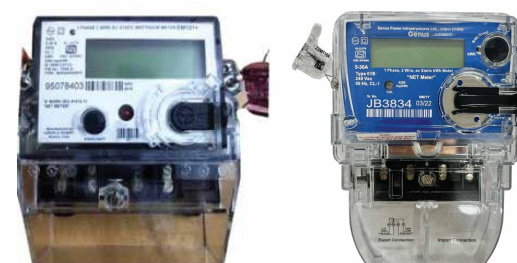
Make	L&T	Genus
System of supply	Three phase	
Rated Voltage	3X240V	
Basic current	10A	
Maximum current	60A	
Frequency	50Hz	



NET METERS

Single phase Net meters

Make	L&T	Genus
System of supply	Single phase	
Rated Voltage	240V	
Basic current	5A	
Maximum current	30A	
Frequency	50Hz	



Three phase Net meters

Make	L&T	Genus
System of supply	Three phase	
Rated Voltage	3X240V	
Basic current	10A	
Maximum current	60A	
Frequency	50Hz	



THREE PHASE LTCT METER ER300P

Phase	Three
Brand	L&t
Model Name/Number	ERP00P
Voltage	110V to 415V
Usage/Application	Industrial
Version Of Communication	Opticalt



WALKWAY

Make: STRIDER

- No corrosion
- High-strength
- Anti-Skid
- UV-Protection



- Long Life
- Easy Installations
- Inclination can be adjusted to make it flat walkway
- Horizontal and vertical Orientations
- Following are the Dimensions
 - a) 400mm(Width)x2000mm(Length)
 - b) 400mm(Width) x 2000mm(Length) x 25mm(Height)
 - c) 350mm(Width) x 2000mm(Length) x 25mm(Height)

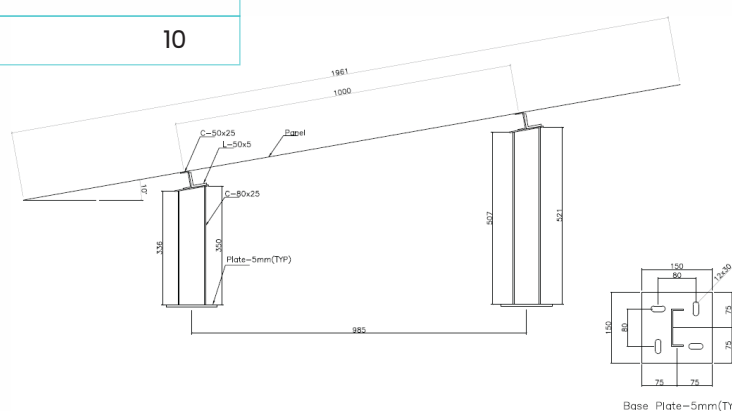
Make: VSL

- Very high strength to weight ratio
- UV Resistant
- Non corrosive
- Ease of installation
- Long Life
- Customization possible



4 PANEL HOT DIPPED GALVANISED SOLAR MOUNTING STRUCTURE

MATERIALS	APPROX. WEIGHT	QTY
PURLINS	10.1	2
LONG LEG	3.2	2
SHORT LEG	2.65	2
HARDWARE FOR STRUCTURE MOUNTING		
	SIZE	QTY
SS BOLT	M10 X 25MM	8
SS PLATE WASHER	M10	16
SS SPRING WASHER	M10	8
SS NUT	M10	8
HARDWARE FOR PV MOUNTING		
	SIZE	QTY
ALUMINIUM MID CLAMP	35mm	6
ALUMINIUM END CLAMP	35/40/42	4
SS ALLEN BOLT	M8 X 25mm	10
SS SPRING WASHER	M8	10
SS NUT	M8	10
SS WASHER	M8	10



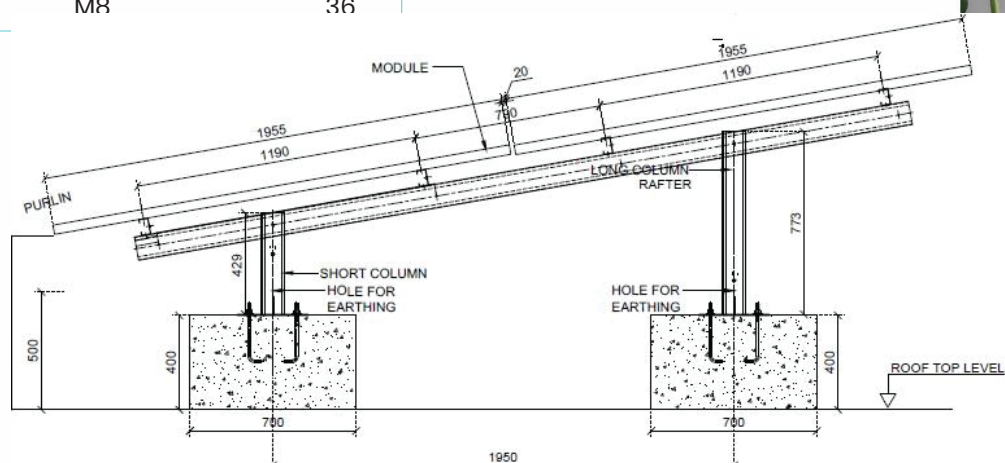
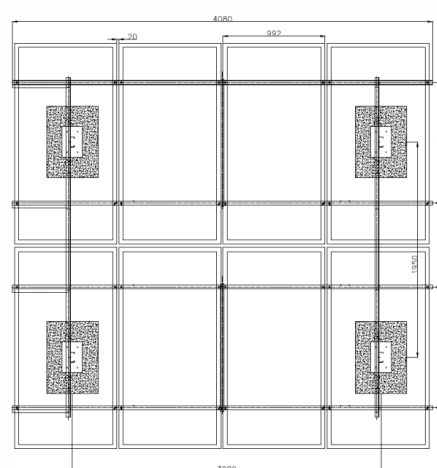
ITEM	PROPERTY
THICKNESS OF PURLINS AND LEG	2mm
THICKNESS OF PLATES	5mm
THICKNESS OF ANGLE SECTION FOR MOUNTING PURLINS	7mm
AVERAGE GALVANIZATION THICKNESS	Approx. 80 Micron
LENGTH OF PURLLIN	4120mm
LONG LEG- HEIGHT	579 mm
SHORT LEG- HEIGHT	394 mm

8 PANEL HOT DIPPED GALVANISED SOLAR MOUNTING STRUCTURE

MATERIALS	APPROX. WEIGHT	QTY
PURLINS	10.1 Kg	4
LONG LEG	5.15 Kg	2
SHORT LEG	3.95 Kg	2
RAFTER	8.25 Kg	2
BEND	.2Kg	8

HARDWARE FOR STRUCTURE MOUNTING	SIZE	QTY
SS BOLT	M10 X 25MM	20
SS PLATE WASHER	M10	40
SS SPRING WASHER	M10	20
SS NUT	M10	20

HARDWARE FOR PV MOUNTING	SIZE	QTY
ALUMINIUM MID CLAMP	35mm	12
ALUMINIUM END CLAMP	35/40/42	8
SS ALLEN BOLT	M8 X 25mm	36
SS SPRING WASHER	M8	36
SS NUT	M8	36
SS WASHER	M8	36



ITEM	PROPERTY
THICKNESS OF PURLINS AND LEG	2mm
THICKNESS OF PLATES	5mm
THICKNESS OF ANGLE SECTION FOR MOUNTING PURLINS	7mm
AVERAGE GALVANIZATION THICKNESS	Approx. 80 Micron
LENGTH OF PURLLIN	4120mm
LONG LEG- HEIGHT	773 mm
SHORT LEG- HEIGHT	429 mm
LENGTH OF THE RAFTER	2500 mm

Note: Dimensions and Weight are indicative and are subjected to change based on availability and revisions.

AC CABLES

Make: APAR



4 SQMM AC Flexible cable

4Sqmm-Apar Anushkati EBXL HRFR Flexible Black
4Sqmm-Apar Anushkati EBXL HRFR Flexible Blue
4Sqmm-Apar Anushkati EBXL HRFR Flexible G/Y
4Sqmm-Apar Anushkati EBXL HRFR Flexible Red
4Sqmm-Apar Anushkati EBXL HRFR Flexible Yellow

10 SQMM AC Flexible cable

10 SQMM Apar Anushkati EBXL HRFR Flexible Black
10 SQMM Apar Anushkati EBXL HRFR Flexible Blue
10 SQMM Apar Anushkati EBXL HRFR Flexible G/Y
10 SQMM Apar Anushkati EBXL HRFR Flexible Red
10 SQMM Apar Anushkati EBXL HRFR Flexible Yellow

25 SQMM AC Flexible cable

25Sqmm-Apar Anushkati EBXL HRFR Flexible Black
--

6 SQMM AC Flexible cable

6Sqmm-Apar Anushkati EBXL HRFR Flexible Black
6Sqmm-Apar Anushkati EBXL HRFR Flexible Blue
6Sqmm-Apar Anushkati EBXL HRFR Flexible G/Y
6Sqmm-Apar Anushkati EBXL HRFR Flexible RED
6Sqmm-Apar Anushkati EBXL HRFR Flexible Yellow

16 SQMM AC Flexible cable

16 Sqmm Alum. APAR AY(AL/FR PVC) Green Yellow
16 SQMM Apar Anushkati EBXL HRFR Flexible Black
16 SQMM Apar Anushkati EBXL HRFR Flexible Blue
16 SQMM Apar Anushkati EBXL HRFR Flexible Red
16 SQMM Apar Anushkati EBXL HRFR Flexible Yellow

50 SQMM AC Flexible cable

50Sqmm-Apar Anushkati EBXL HRFR Flexible Black
--

SOLAR DC CABLES

Make: APAR

4 SQMM DC Cable

4Sqmm Apar Make Solar Cable Black
4Sqmm Apar Make Solar Cable Red

10 SQMM DC Cable

10 Sqmm 1 C Apar Make Solar Cable Black
10 Sqmm 1C Apar Make Solar Cable Red

6 SQMM DC Cable

6 Sqmm 1 C Apar Make Solar Cable Black
6 Sqmm 1C Apar Make Solar Cable Red

16 SQMM DC Cable

16 Sqmm 1 C Apar Make Solar Cable Black
16 Sqmm 1C Apar Make Solar Cable Red



KEI – 4 Core Aluminium Armoured Cable

Available sizes	16 Sq Mm 4 Core, 25 Sq Mm 4 Core
Insulation Material	PVC
Conductor	Aluminium
Color	Black



Make: APAR

APAR Aluminum Armoured cables

10sqmm 2 Core A2XWY (AL/XLPE/PVC/GS WIRE/PVC) APAR
10sqmm 4 Core A2XFY(AL/XLPE/PVC/GS STRIP/PVC) APAR
16sqmm 4 Core A2XFY(AL/XLPE/PVC/GS STRIP/PVC) APAR
4sqmm 4 core A2XW AL/XLPE/PVC/GS WIRE/PVC APAR
6sqmm 4 Core A2XWY (AL/XLPE/PVC/GS WIRE/PVC) APAR

**ALUMINIUM CABLE FOR EARTHING**

Make: APAR

10 sqmm Alu. APAR SHAKTI AY(AL/FR PVC) Green Yellow
16 sqmm Alu. APAR SHAKTI AY(AL/FR PVC) Green Yellow

**ENCLOSURES**

Make: STRIDER

Protection grade: IP65
Window color: transparent
Window material: PC
Flame Retardant

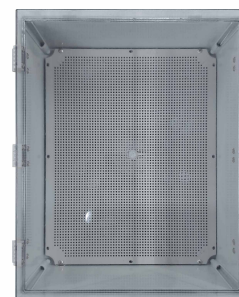
Dimensions	Enclosure material	Size CM	Product weight gm
4WAY	ABS/PC	12.5*19*9	369
6WAY	ABS/PC	15.5*19*10	500
9WAY	ABS/PC	21*19*10	625
12WAY	ABS/PC	26.5*22*11	855
18WAY	ABS/PC	37*22*11	1132



ABS WATERPROOF BUCKLE CASE ENCLOSURES

Make: TRINITY TOUCH

DIMENTION	MATERIAL	DEGREE OF PROTECTION
350 X 250 X 130	ABS	IP 66
400 X 300 X 170	ABS	IP 66
500 X 400 X 200	ABS	IP 66



Make: HENSEL

Dimensions	Impact strength	Static load	Rated insulation voltage	Material	Degree of protection
217x253x115mm	IK 08 (5 Joule)	Mounting plate or DIN rail = 1.6kg lid = 1.6kg	Ui = 690 V a.c./1000V dc	Polycarbonate	IP 66
300x300x170mm	IK 08 (5 Joule)	Mounting plate or DIN rail = 6.5 kg lid = 1.6kg	Ui = 690 V a.c./1000V dc	Polycarbonate	IP 66
217x253x115mm	IK 08 (5 Joule)	Mounting plate or DIN rail = 9.2kg lid = 3.2kg	Ui = 690 V a.c./1000V dc	Polycarbonate	IP 66
300x600x170mm	IK 08 (5 Joule)	Mounting plate or DIN rail = 9.2kg lid = 3.2kg	Ui = 690 V a.c./1000V dc	Polycarbonate	IP 66



Make: RITTAL

Dimensions mm	Enclosure/Door material	Material thickness			Mounting plate		Degree of protection
		Enclosure mm	Door mm	Mounting plate mm	Width mm	Height mm	
300X300X210	Sheet steel/ Sheet steel, all-round foamed in PU seal	1.38	1.5	2	254	275	IP 66
300x400x210	Sheet steel/ Sheet steel, all-round foamed in PU seal	1.38	1.5	2	254	375	IP 66
400X500X210	Sheet steel/ Sheet steel, all-round foamed in PU seal	1.38	1.5	2	354	475	IP 66
500x500x210	Sheet steel/ Sheet steel, all-round foamed in PU seal	1.38	1.75	2.5	449	470	IP 66
500x700x250	Sheet steel/ Sheet steel, all-round foamed in PU seal	1.5	2	2.5	449	670	IP 66
500x500x210	Sheet steel/ Sheet steel, all-round foamed in PU seal	1.38	1.75	2.5	549	570	IP 66



Make: TRINITY TOUCH

Dimensions	Enclosure material	Impact strength	Degree of protection	Cover colour
130x80x60	ABS/PC	IK07/08	IP66/67	Transparent
180x130x100	ABS/PC	IK07/08	IP66/67	Transparent
180x180x100	ABS/PC	IK07/08	IP66/67	Transparent
280x190x130	ABS/PC	IK07/08	IP66/67	Transparent
280x190x170	ABS/PC	IK07/08	IP66/67	Transparent
280x280x130	ABS/PC	IK07/08	IP66/67	Transparent
380x190x130	ABS/PC	IK07/08	IP66/67	Transparent
380x280x130	ABS/PC	IK07/08	IP66/67	Transparent
380x280x180	ABS/PC	IK07/08	IP66/67	Transparent
560x380x180	ABS/PC	IK07/08	IP66/67	Transparent
600x600x225	ABS/PC	IK07/08	IP66/67	Transparent



FINDER S.P.A

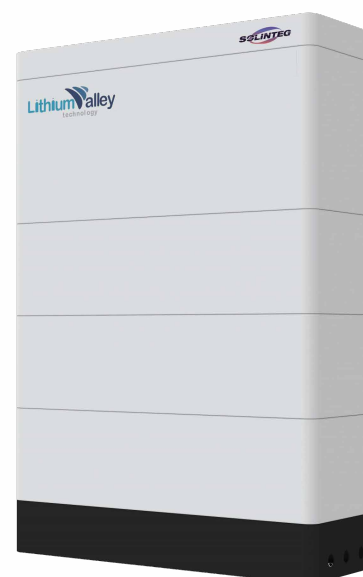
Finder's wide range of industrial solutions includes devices for industrial applications and automation. From multi purpose relays and components for electrical panels to specific devices for automatic warehouses, packaging and lift systems, products for the food & beverage sector, devices for ATEX rated explosive atmospheres and for the protection of facilities and equipment.



LI-ION BATTERY

MAKE : SOLINTEG

- High-voltage LiFePO4 battery solution, Single module is 51.2V 50Ah 2.56kWh.
- 3 to 10 layers recommended.
- Inverter you need to choose 380V 3phase input and output, common is 8-15KW inverter.
- Cobalt Free Lithium Iron Phosphate (LFP) Battery: Maximum Safety, Life Cycle and Power.
- Applicable on grid or hybrid on and off-Grid solar energy storage system.
- Self-Consumption Optimization for Residential and Commercial Applications.
- Modular Design Simplifies Transport and Installation.



SOLAR PV MODULES



ANCHOR

550W
NON DCR MONO



ANCHOR

540W
BIFACIAL DCR



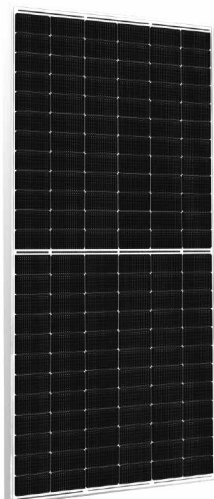
RENEWSYS

550W
MONO NON DCR



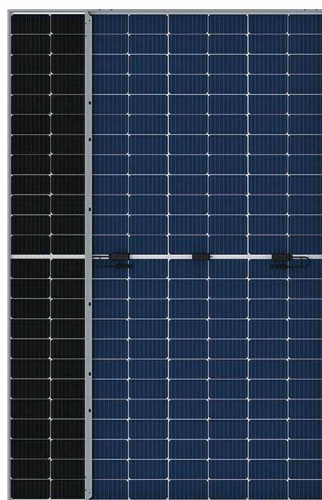
RAYZON

545/550 W
BIFACIAL DCR



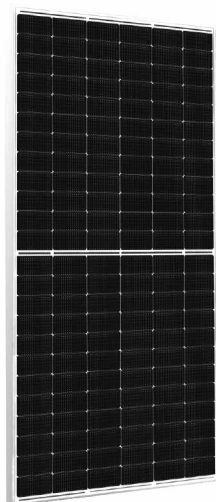
RAYZON

550 W
MONO NON DCR



RAYZON

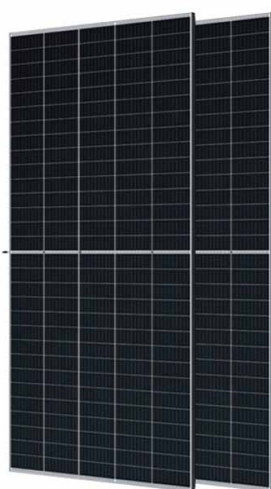
580 W
NON DCR TOPCON BIFACIAL



SOLAIRE

550 W

MONO PERC DCR



CREDENCE

670 W

HALF CUT MONO PERC

FLEXIBLE BUSBARS

Make: SALZER

Conductor Material	E-Cu 99.9 (standard)/ E-Cu tinned
Strip thickness	1 mm
Hardness	65 VPN
Insulation Material	Special high flexible PVC



GRID TIED INVERTERS

Make: FIMER

Grid Tied Inverters	UNO DM 3.3	UNO DM 5	PVI 10.0	PVI 12.5
Rated DC input voltage	18.1V	18.5V	18.1V	18.5V
Rated DC input power	3500W	5150W	10300W	12800W
Number of independent MPPT	2	2	2	2
Maximum DC input power for each MPPT	2000W	3500W	6500W	8000W
DC input voltage range with parallel configuration of MPPT at P_{acr}	170...530V	145...530V	300...750V	360...750V
Maximum DC input current (I_{dcmax}) / for each MPPT ($I_{MPPTmax}$)	20.0/10.0A	38.0/19.0A	34.0A/17.0A	36.0A/18.0A
Maximum input short circuit current for each MPPT	12.5/25.0A	22.0/44.0A	22.0A	



Number of DC input pairs for each MPPT	1	1	2 (-S version) 3 (Standard or -FS version)	
AC grid connection type	Single phase		Three-phase 3W+PE or 4W+PE	
Rated AC power	3300W	5000W	10000W	12500W
Maximum AC output power	3300W	5000W	11000W	13800W
Rated AC grid voltage	230V	230V	400V	
Maximum AC output current (I_{acmax})	14.5A	22.0A	16.6A	20.0A
Maximum efficiency	97%	97.4%	97.8%	

Grid Tied Inverters	PVS 20KW	PVS 33KW	PVS 50	PVS 100
Rated DC input voltage	620V	620V	610V	620V
Rated DC input power	20500W	33700W	52000W	102000W
Number of independent MPPT	2	4	3 (version SX and SX2) / 1 (version standard e S)	
Maximum DC input power for each MPPT	12000W	2x12000W + 2x10000W	19300W@ 30°C/17500W@45°C	17500 W [480V≤ VMPPT≤850V
DC input voltage range of MPPT at P_{acr}	460...850V	460...850V	480...800V	480...850V
Maximum DC input current (I_{dcmax}) for each MPPT ($I_{MPPTmax}$)	2x26A	2x26A + 2x22A	36A	36A
Maximum input short circuit current for each MPPT	40A	40A	55A(165A in case of parallel MPPT)	50A
Number of DC input pairs for each MPPT	2	2	5	4
AC grid connection type	Three-phase 3W+PE or 4W+PE		Three-phase (3W+PE or 4W+PE), grounded WYE system only	Three phase 3W+PE or 4W+PE
Rated AC power	20000W	33000W	50000W	100000W
Maximum AC output power	22000W	36300W	55000W up to 100000W 30°C	
Rated AC grid voltage	400V	400V	400V	400V
Maximum AC output current (I_{acmax})	33.4A	55.1A	80A	145A
Maximum efficiency	98.4%	98.4%	98.3%	98.4%



Make: FRONIUS

Grid Tied Inverters	SYMO 5.0	SYMO 6.0	SYMO 8.2	PRIMO 5	PRIMO 8.2
Max. input current	16.0A			6.25kWp	6.25kWp
Max. array short circuit current(MPP ₁ /MPP ₂)	24.0A/24.0A			18.0A/18.0A	27.0A/27.0A
Min.Input Voltage	150V				80V
MPPT Voltage Range	163-800V	195-800V	267-800V	240-800V	270-800V
Nominal input Voltage	595V				700V
Nominal input Voltage			1000V		
Number of Independent MPPT			2		
Number of DC connections			2+2		
MPPT Voltage Range	5000W	6000W	8200W	5000W	8200W
AC output current	7.2A	8.7A	11.8A	21.7A	35.7A
Grid coonection	3-NPE 400 V / 230 V or 3~NPE 380 V / 220 V (+20 % / -30 %)			1 ~ NPE 220 V / 230 V (180 V - 270 V)	
Frequency			50Hz/60Hz		
Total Harmonic distortion	<3%				<5%
Power factor			0.85-1 ind./cap		
Degree of protection			IP65		



Make: POLYCAB

Grid Tied Inverters	2KW	3KW	4KW	5KW	6KW	10KW
Max. input power	2.4KW	3.6KW	3.6KW	6KW	7.2KW	12KW
Max. Input voltage	500V	600V	600V			1000V
Startup Input Voltage	60V	120V	120V	120V		330V
Maximum Input DC Voltage Range	50-400V	100-500V	100-500V	100-500V		200-800
Maximum input current (A)	10	10+10		15+15	15+15	18+18
MPPT Number/No of strings per MPPT	1,1	2,1	2,1	2,1	2,1	2,2
Rated output power (kW)	2	3	4	5	6	10

Rated AC Grid Voltage(V)	220/230/240				400	
AC Grid voltage range(V)	180-270				313-470	
Operating phases	Single phase				Three phase	
Nominal AC Output current (A)	8.7	13	17.4	21.7	8.7	14.5
Operating Frequency range (Hz)	47-52					
Total Harmonic distortion	<3%					
Output Power factor	>0.99				0.8 leading...0.8 lagging	
Degree of protection	IP65					

Make: POLYCAB

Grid Tied Inverters	15KW	20KW	25KW	30KW	36KW	40KW	50KW	60KW
Max. input power(kW)	18	24	30	36	43	48	60	72
Max. Input voltage(V)				1000V		1100V		
Startup Input Voltage	330V			350V		200V		
Maximum Input DC Voltage Range	200-800V			200-850V		200-1000V		
Maximum input current (A)	18+18			18+18+18+18		28.5A+28.5A+28.5A+28.5A		
MPPT Number/No of strings per MPPT	2,2			4,2		4/3		
Rated output power (kW)	15	20	25	30	36	40	50	60
Rated AC Grid Voltage(V)	220/230/240			400		400		500
AC Grid voltage range(V)	313-470		304-460		384-476		304-460 384-576	
Operating phases				Three phase				
Nominal AC Output current (A)	21.7	28.7	36.1	43.3	43.3	48.1	72.2	72.2
Operating Frequency range (Hz)				47-52				
Total Harmonic distortion				<3%				
Output Power factor	>0.99			0.8 leading...0.8lagging				
Total Harmonic distortion	97.5%			98.3%		98.8%		99%
Degree of protection				IP65				

Make: ANCHOR BY PANASONIC

RENO-3.3 KTLX

Easy usability – Plug & Play
Quick configuration with OLED Display
Reliable Performance with 97.6% maximum efficiency
Lightweight, compact & Low Noise– Ideal for residential setups
IP 65 Enclosure for outdoor installations



INO-5 KTLX

Easy usability – Plug & Play
Quick configuration with OLED Display
Reliable Performance with 98.4% maximum efficiency
Dual MPPT for better shade performance
Lightweight, Compact & IP 65
Enclosure– Ideal for residential setups



STELLAR-6/8/10 KTL3X

Reliable Performance with 98.6% maximum efficiency
Dual MPPT for better shade performance
Designed for C5 Corrossion Protection
IP 65 Enclosures
Plug & Play device with Quick configuration through OLED Display
25 Years Data Storage over cloud



Make: SOLAIRE

Solaire X1 ZIP 3.3KW

- DC Input: 200% oversizing, 16A current, 50~550V wider MPPT voltage range
- In-built global MPP scan for higher yields



Solaire X1 ZAP 5KW

- DC Input: 200% oversizing, 16A current, 50V startup voltage
- In-built global MPP scan for higher yield efficiency



Solaire X3 ZOOM

3PH Models
8KW, 10KW, 12KW & 15KW

- Max. MPP current per string is 16A, supporting high-power solar panels
- In-built global MPP scan for higher yield efficiency
- Maximum efficiency is up to 98.3%
- 200% oversizing, 110% overloading output (Except 15kW model)



Make: SOLINTEG

3.3KW ONGRID INVERTER

SINGLE PHASE



- Max. Efficiency 97.5%
- PV Input Current 15A
- Start-up Voltage 60V
- AC Overloading 110%

5KW ONGRID INVERTER

SINGLE PHASE



Energy Storage System

- Max. Efficiency 97.5%
- PV Input Current 15A
- Start-up Voltage 60V
- AC Overloading 110%

5/10/15/20/25KW ONGRID

THREE PHASE



- Max. Efficiency 98.6%
- PV Input Current 15A
- Start-up Voltage 180V
- AC Overloading 110%

5KW HYBRID INVERTER

SINGLE PHASE



- Max. Efficiency 97.6%
- PV Input Current 15A
- Charge/Discharge 30V
- UPS-level Switch 10ms

5KW HYBRID INVERTER

THREE PHASE



- Max. Efficiency 98.2%
- PV Input Current 15A
- Unbalanced Output 110%
- UPS-level Switch 10ms

HOMEONE

Energy Storage System

HSH-3/5K



- 20A PV Input Current: Optimized for highefficiency solar panels.
- Dual MPPT: Extracts maximum power from two solar array orientations.
- 80V Low Voltage StartUp: Enables early start and late shutdown for extended daily operation.
- High Charging Efficiency: Up to 50A battery charging/discharging current.

UTILITY COMBINER BOX WITH RELAY CIRCUIT

Distribution Board consists of Molded Case Circuit Breaker for Isolation, Core Balance Current Transformer and Relay Circuit for Residual Current Protection

CHANGEOVER PANEL WITH COMMUNICATION



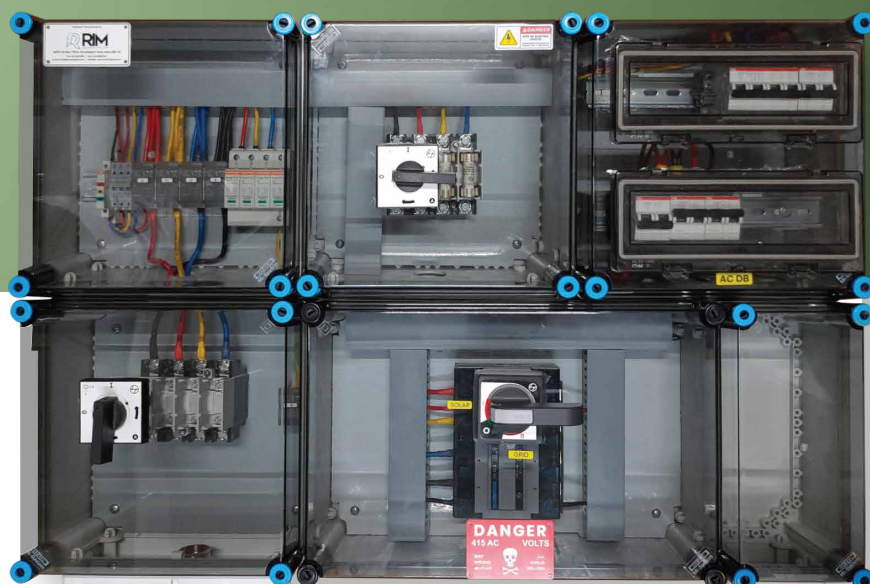
Changeover mechanism between DG Machines
with Auxiliary circuitry for Interlocking

AC COMBINER BOX WITH BYPASS SWITCH



ChangeoverPanel for Power Switching
between Utilities

COMPARTMENTALIZED HENSEL ACDB FOR HOME AND COMMERCIAL APPLICATIONS



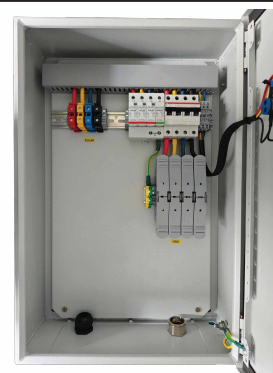
AC DISTRIBUTION BOXES



Reliable single-phase ACDB with rotary changeover switch, designed for seamless source switching in hybrid systems, ensuring optimal performance and flexibility



Three-phase ACDB with a changeover switch, designed for efficient and reliable source switching in hybrid power systems, ensuring optimal load management and protection



Engineered for safety and performance, our three-phase AC combiner box with AC breaker & surge protection ensures secure termination of aluminum underground cables, even in the toughest environments.



The three-phase load distribution box is outfitted with breakers for both sources and loads, as well as a changeover switch to ensure seamless transitions.



Three Phase Panel DB for Load Sharing with Solar meter, Circuit breakers for Solar Side, Grid Side and for Load side



Three Phase Distribution box for combining four Inverters, includes Circuit breakers for each inverter, Molded case circuit breaker and Surge protection in output side.

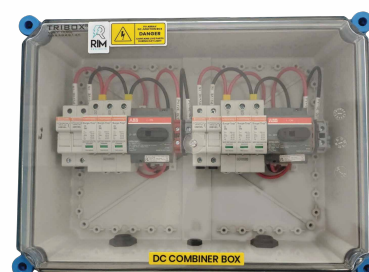
STRING COMBINER BOXES



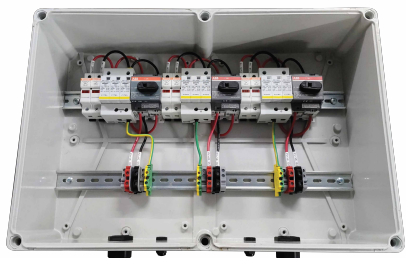
Dual String Combiner box with 1000V DC Isolator, Surge protection, String Fuses, in Strider enclosure



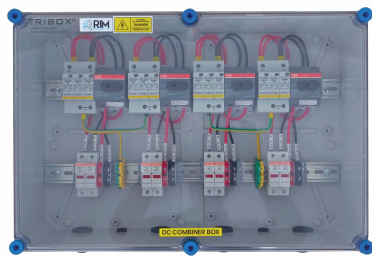
Dual String Combiner box with 1000V DC Isolator, Surge protection, String Fuses, in Hensel enclosure



Dual String Combiner box with 1000V DC Isolator, Surge protection, String Fuses, in Trinity enclosure



String Combiner box with Six inputs with String fuses and Six outputs with three isolators and three surge protection devices



The String Combiner box is outfitted with four inputs and four outputs, each with individual string fuses, isolators, and surge protection devices. These components are designed to enhance performance and safety, guaranteeing optimal functionality.



The String Combiner box features eight Inputs & 8 Outputs, each equipped with separate string fuses, isolators, and surge protection devices for optimal performance and safety.

CUSTOMIZED DCDB



Custom String Combiner Box with Five Input Channels, Integrated DC Isolator Switches, Surge Protection Device, and Unified Output for Optimized Solar System Performance and Safety

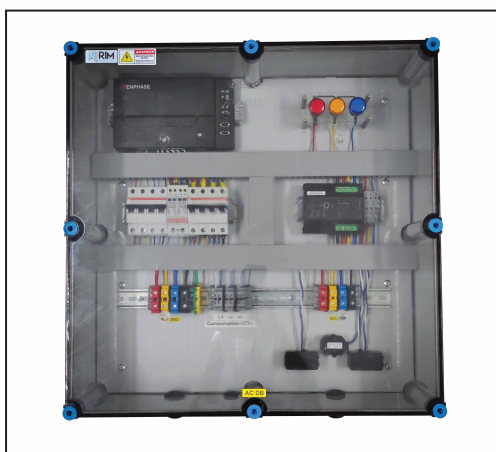


To maximize your solar efficiency, we present our specially made 1500V DCDB, which is equipped with string fuses, a DC switch, and a DC SPD for enhanced assurance of reliability.

CUSTOMIZED ACDB



our customized inverter combiner solution, featuring separate breakers for each inverter, integrated surge protection device for grid interfacing, and phase indication for immediate outage detection and system monitoring. This advanced system is designed to optimize performance and ensure seamless operation.



Smart Solar Solutions: Experience enhanced energy monitoring and management with our Enphase Inverter ACDB, featuring the Envoy, IQ Relay, and built-in provisions for both consumption and production CTs.



Innovative Load Management: Enhance your energy strategy with our ACDB, designed for solar load sharing with MCBs and a smart meter for precise energy tracking and distribution.



Maximize your solar system's potential with our custom AC combiner box. Featuring a solar energy meter for precise monitoring, a 4-pole switch fuse unit for reliable control, MCB for overcurrent protection, and SPD for surge protection, this solution guarantees safety and efficiency. Perfect for any solar setup.

STRIDER COMBINER BOXES



EV CHARGER

DELTA AC MINI PLUS EV CHARGER

Type 2 plug 7.36kW or Type 2 socket 3.68kW

Up to 32A @ 230V charging

User-friendly interface and RFID authentication

Built-in network connectivity (OCPP 1.6)

IP55 protection and IK08 vandal-proof casing



INPUT POWER

Input Rating	230 Vac, single phase, 16 A or 32 A maximum, 50/60 Hz
Number of Phase / Wire	L, N and PE (Ground), hardwired with terminal block
Standby Power	<5W
Internal RCD	30 mA RCD and DC 6 mA RCD function

OUTPUT POWER

Output Rating	230 Vac, single phase, 16 A or 32 A maximum, 50 / 60 Hz
Charging Interface	3.68 kW Socket or 7.4 kW Plug

FIMER FLEXA AC WALLBOX

The FIMER FLEXA AC Wallbox is a wall-mounted or Stand-mounted charging device for electric vehicles designed for private applications as well as for public parking lots and company parking areas.



WE ARE THE AUTHORIZED DISTRIBUTOR FOR TOP BRAND SOLAR COMPONENTS



WE ARE THE AUTHORISED CHANNEL PARTNER



RIM PROJECTS PVT. LTD

RIM PROJECTS EXPERIENCE CENTRE



RIM PROJECTS WAREHOUSE CHOWARA



EXPERIENCE CENTRE



WAREHOUSE

14/204 A Kalpaka Nagar, Athani
Nedumbassery, Kerala 683585

49HM+VP9, Pattoorkunnu Road
Chowara, Kerala 683571

 CALL US

+91 90722 20157, +91 94008 90343, +91 97462 16283
+91 80890 93339, +91 97449 90343, +91 7736558111

 MAIL US

sales@rimprojects.com, sales2@rimprojects.com
sales3@rimprojects.com, sales5@rimprojects.com
sales5@rimprojects.com, info@rimprojects.com,



www.rimprojects.com

